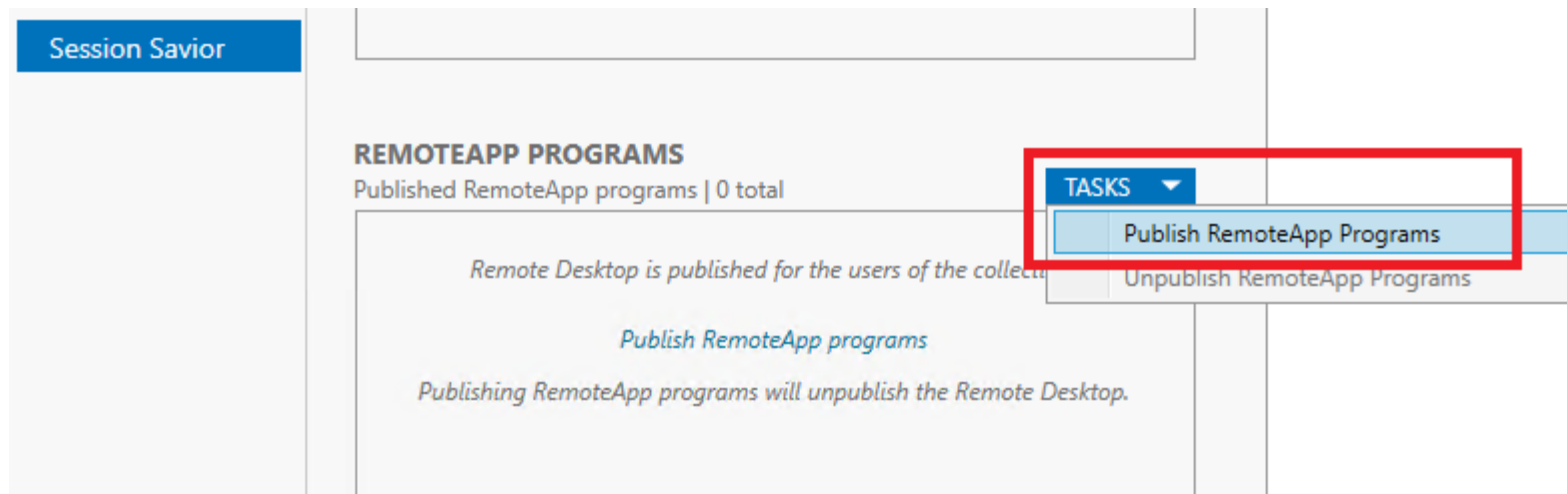


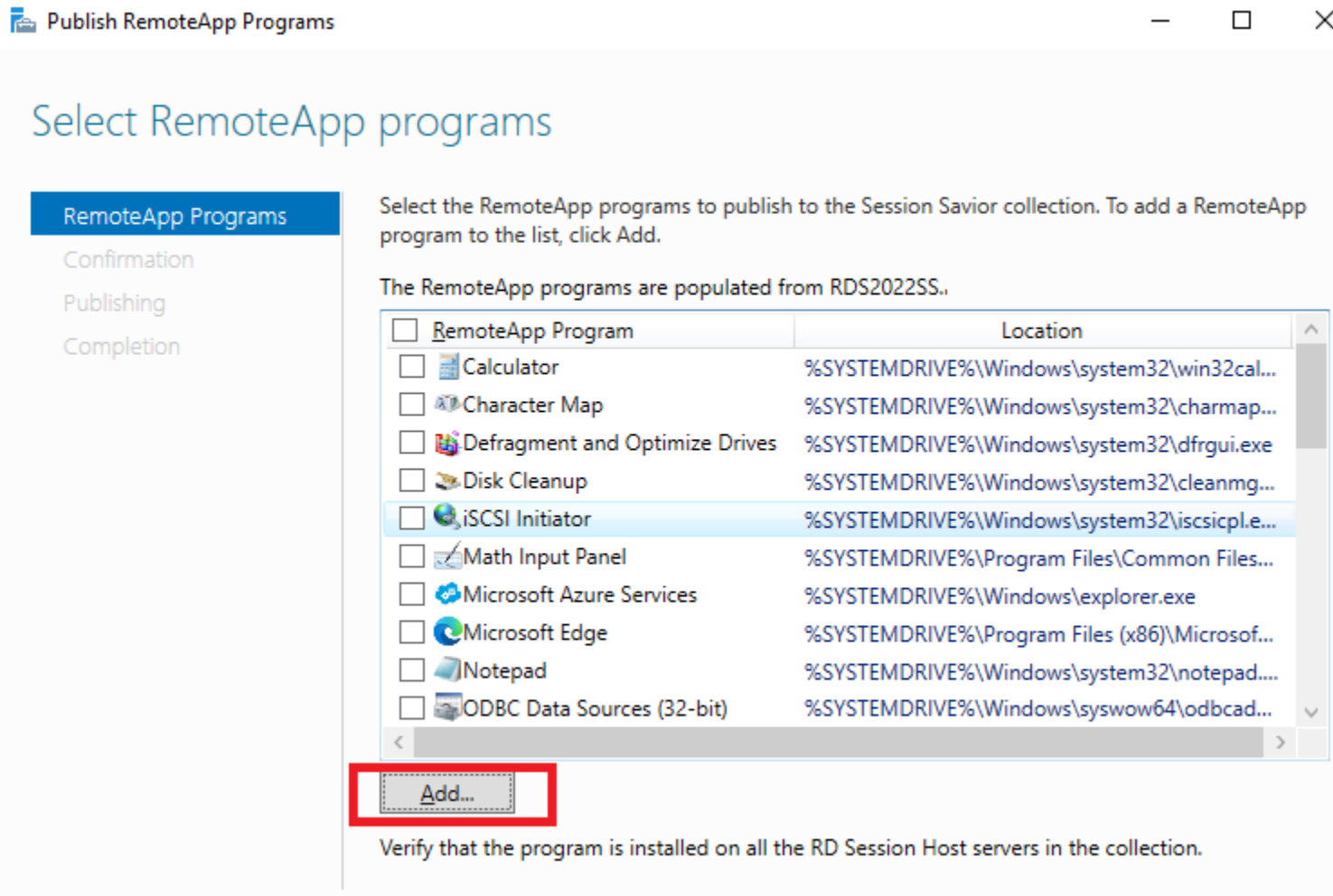
## Appendix B: How to Publish the Session Savior App in RDS

*Note: In order to publish the Session Savior app in RDS, you must first have installed the Fix My Session Agent components to the new Session Savior session host VM(s) you created when building the new Session Savior RDS collection in the previous step. If you have not done this yet, do so in the Fix My Session Configuration Tool, under the Host and Agent Management Tab.*

1.) First, navigate to the Session Savior collection you created previously, navigate to RemoteApp programs, and choose "Tasks," then "Publish RemoteApp Programs."



2.) Next, click the "Add" button.



Publish RemoteApp Programs

### Select RemoteApp programs

RemoteApp Programs  
Confirmation  
Publishing  
Completion

Select the RemoteApp programs to publish to the Session Savior collection. To add a RemoteApp program to the list, click Add.

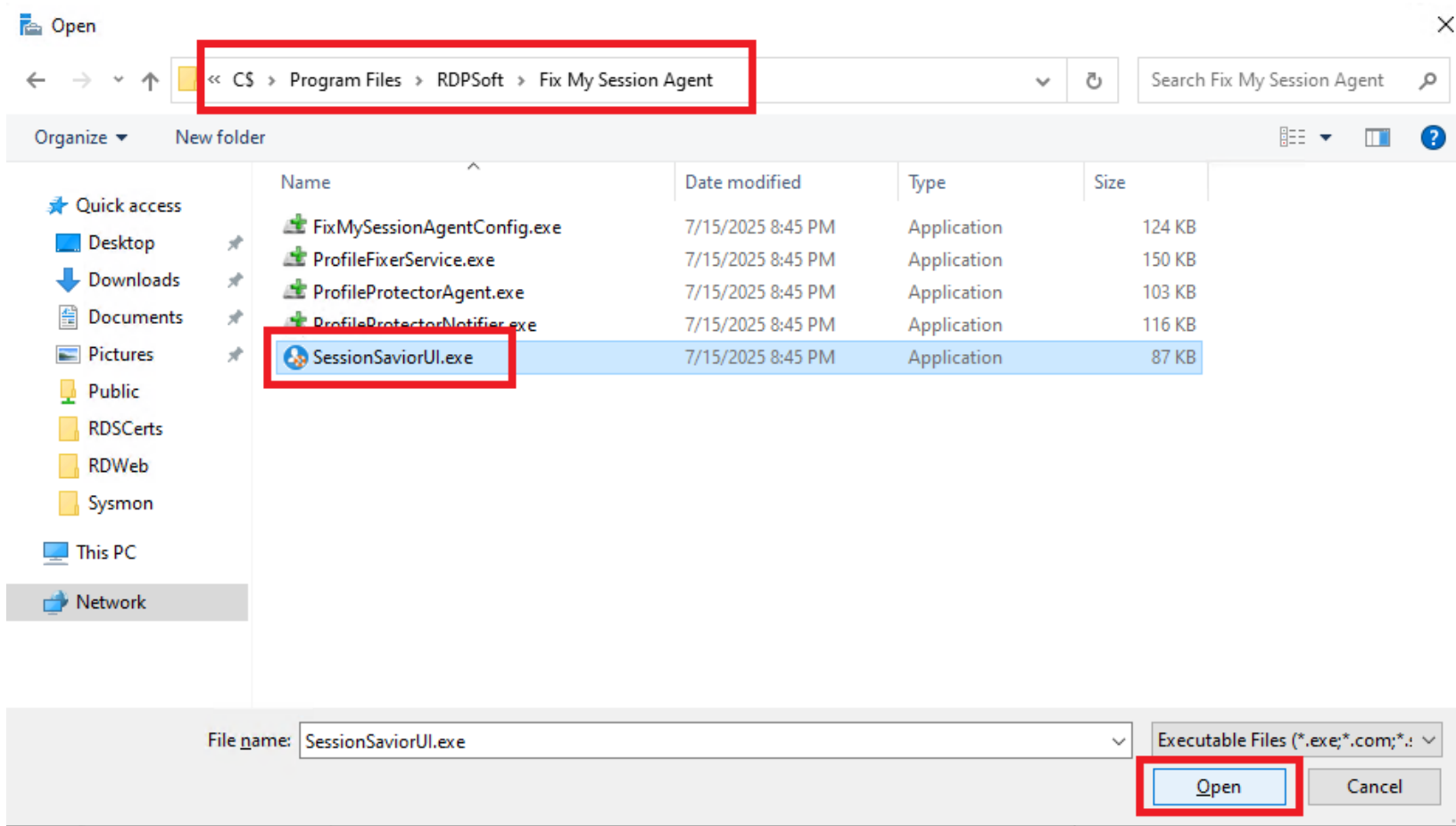
The RemoteApp programs are populated from RDS2022SS..

<input type="checkbox"/>	RemoteApp Program	Location
<input type="checkbox"/>	Calculator	%SYSTEMDRIVE%\Windows\system32\win32cal...
<input type="checkbox"/>	Character Map	%SYSTEMDRIVE%\Windows\system32\charmap...
<input type="checkbox"/>	Defragment and Optimize Drives	%SYSTEMDRIVE%\Windows\system32\dfgui.exe
<input type="checkbox"/>	Disk Cleanup	%SYSTEMDRIVE%\Windows\system32\cleanmg...
<input type="checkbox"/>	iSCSI Initiator	%SYSTEMDRIVE%\Windows\system32\iscsicpl.e...
<input type="checkbox"/>	Math Input Panel	%SYSTEMDRIVE%\Program Files\Common Files...
<input type="checkbox"/>	Microsoft Azure Services	%SYSTEMDRIVE%\Windows\explorer.exe
<input type="checkbox"/>	Microsoft Edge	%SYSTEMDRIVE%\Program Files (x86)\Microsof...
<input type="checkbox"/>	Notepad	%SYSTEMDRIVE%\Windows\system32\notepad....
<input type="checkbox"/>	ODBC Data Sources (32-bit)	%SYSTEMDRIVE%\Windows\syswow64\odbcad...

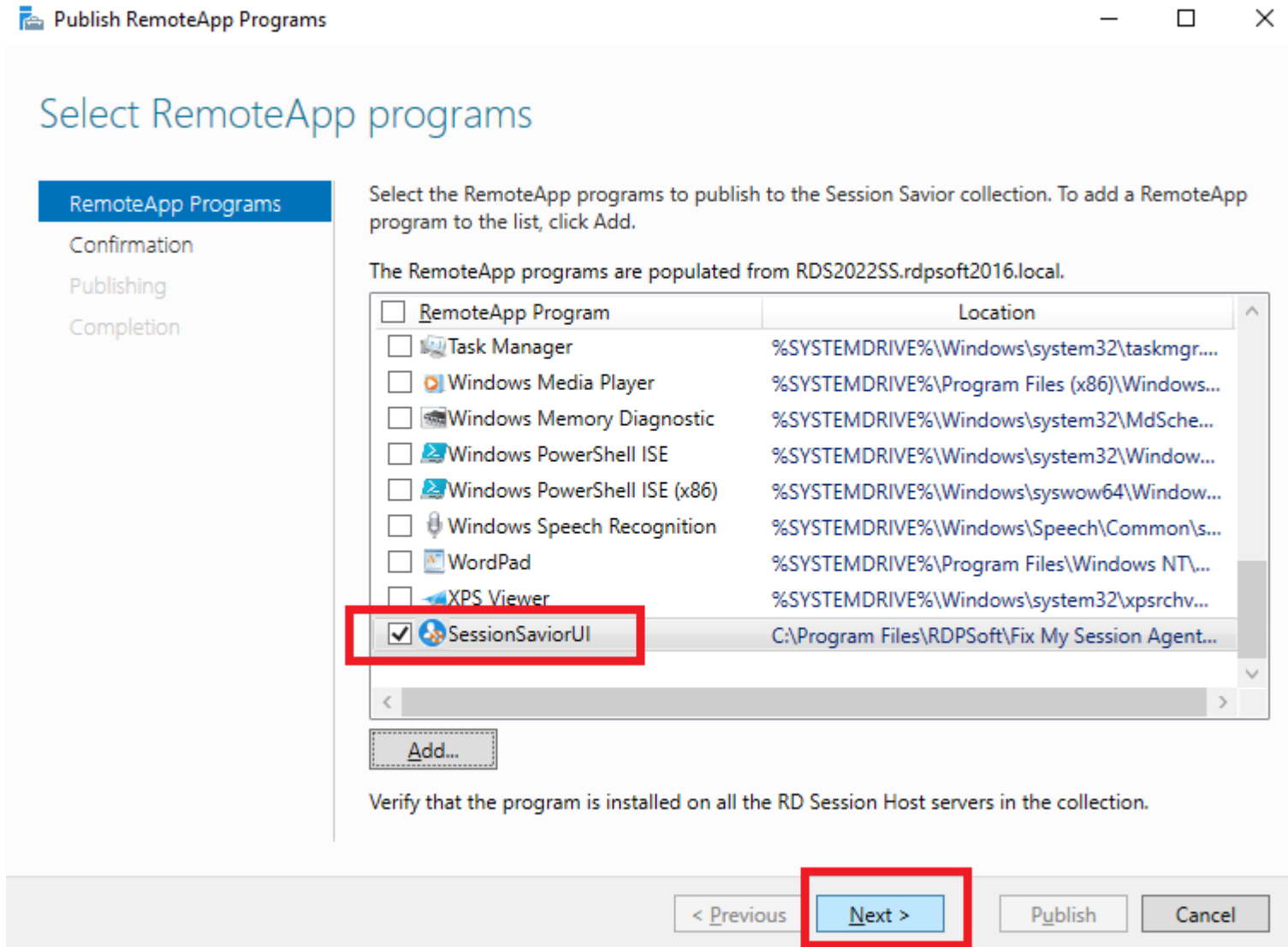
**Add...**

Verify that the program is installed on all the RD Session Host servers in the collection.

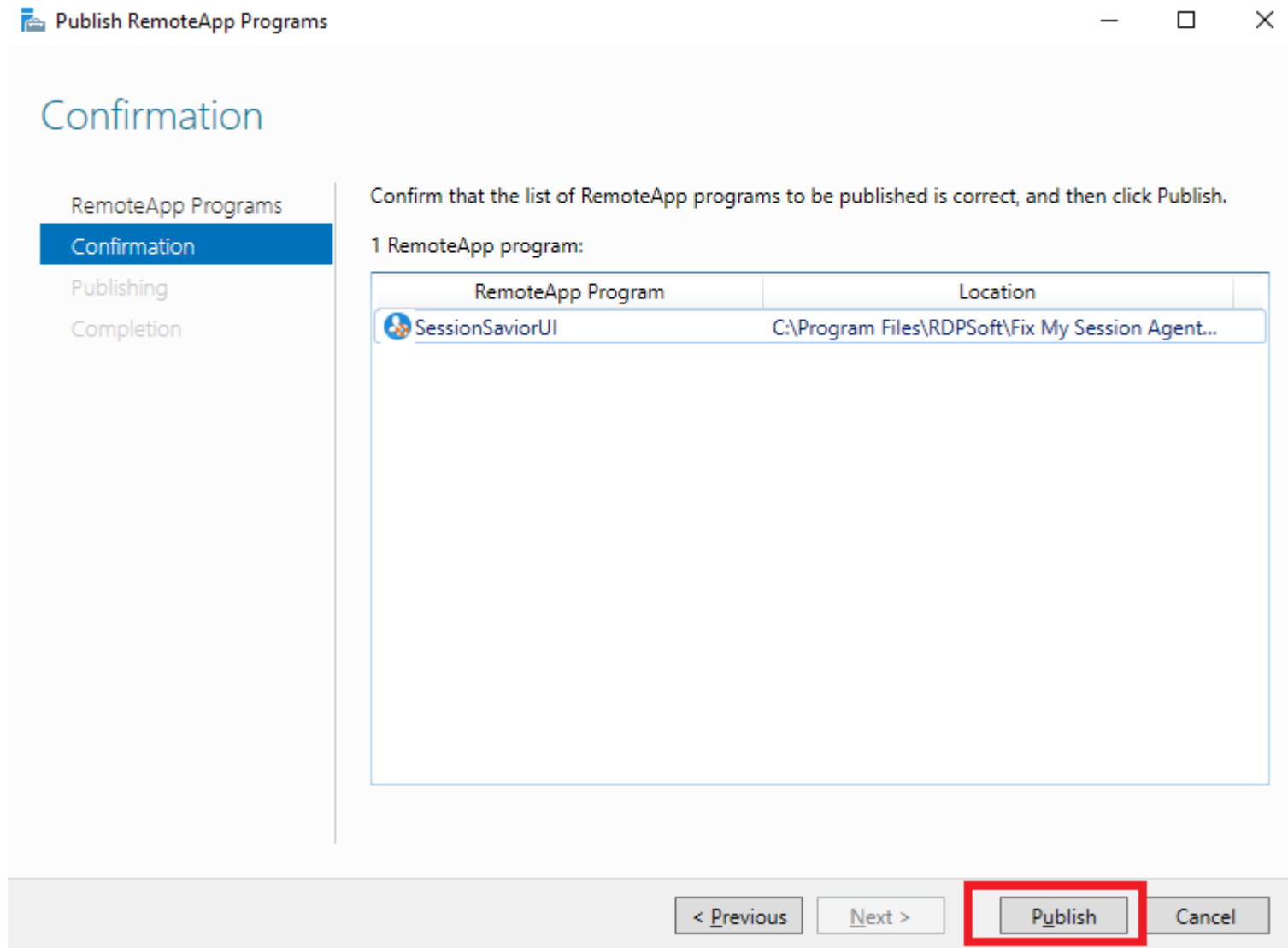
3.) On the Session Savior RemoteApp Host, browse to C\$ > Program Files > RDPSOft > Fix My Session Agent, and select the SessionSaviorUI.exe program, then click "Open."



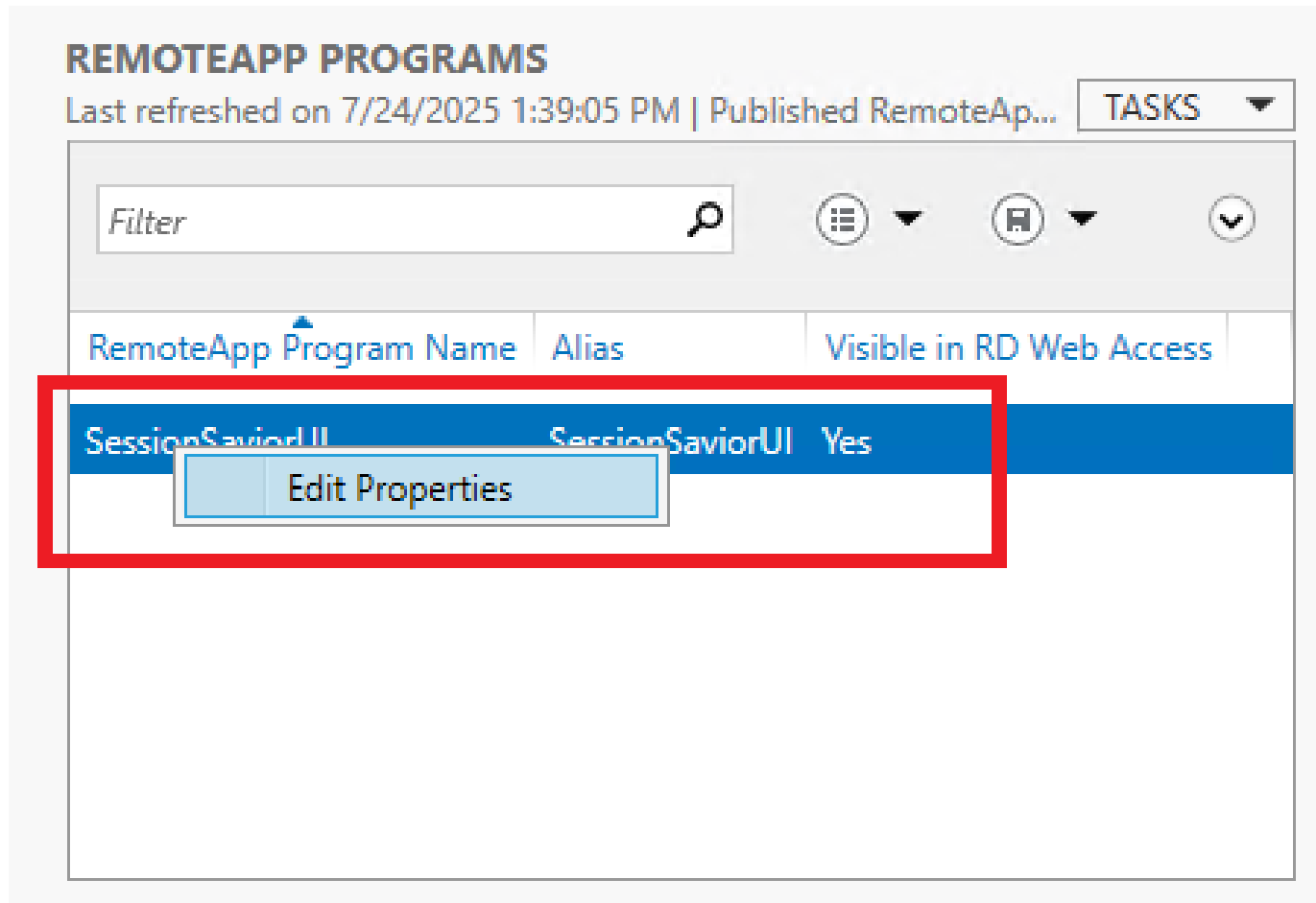
4.) Make sure SessionSaviorUI is now checked, then click "Next."



5.) Click "Publish" to publish it as a RemoteApp.



6.) If you would like to change the name of the app and how it appears to users in your RDWeb portal or RADC feed, right mouse click on SessionSaviorUI in the RemoteApp Programs area, and click "Edit Properties."



# SessionSaviorUI (Session Savior Collection)


- Show All
- General -
- Parameters +
- User Assignment +
- File Type Associati... +

General

RemoteApp program name:  
Fix My Hung Session

Alias:  
SessionSaviorUI

RemoteApp program location:  
C:\Program Files\RDPSOft\Fix My Session Agent\SessionSaviorUI.exe

Current icon: 

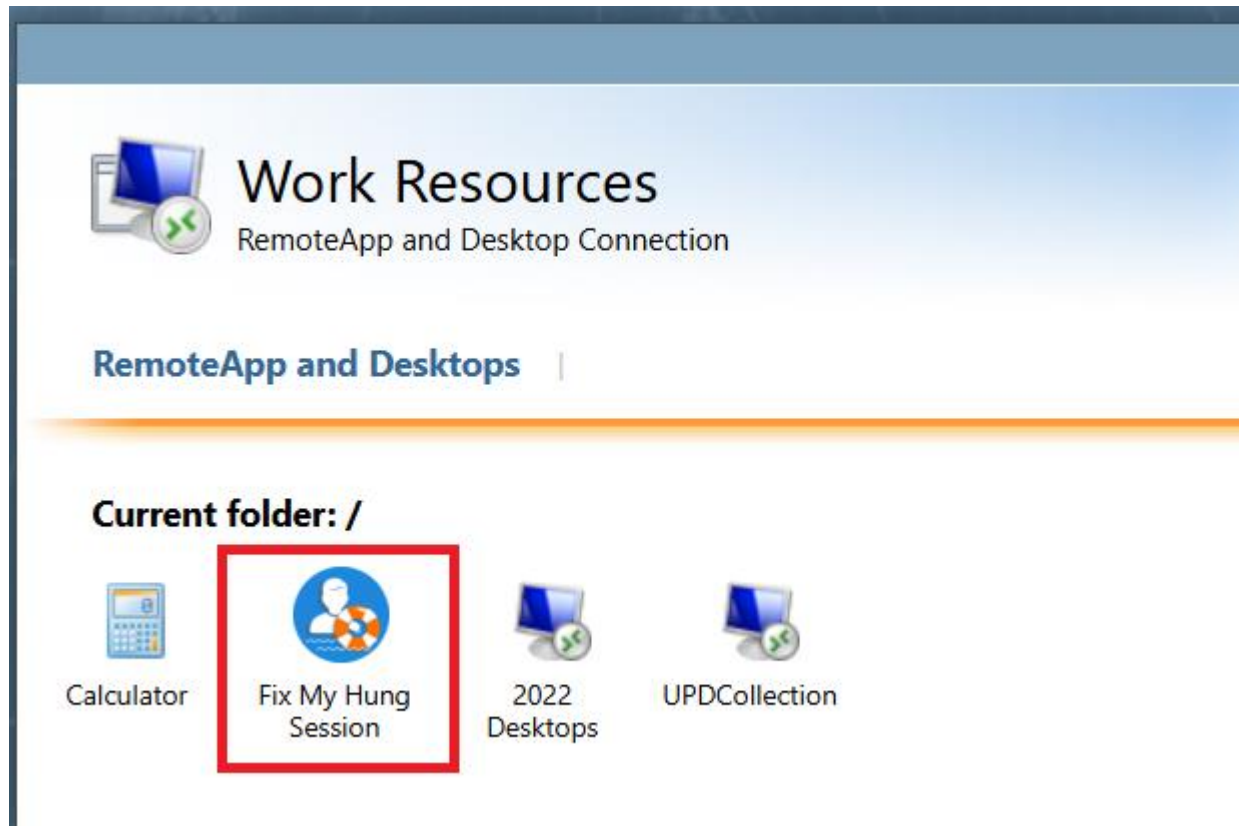
Show the RemoteApp program in RD Web Access  
 Yes  No

Type the name of the folder in which you want this RemoteApp program to appear on the RD Web Access server. If you do not want the RemoteApp program to appear in any folder, leave this field blank.

RemoteApp program folder:

OK Cancel Apply

7.) If you have published the SessionSavior app correctly, when you log into RDWeb, you will see it listed among your other RemoteApp and full desktop collections. You can also save the RDP file from RDWeb for the Session Savior app and distribute it to users to run when their sessions are stuck, should you wish.



8.) When the Session Savior app is launched, it will poll all servers you have configured it to target via the [Self Directed Session Fixer tab](#) in the Fix My Session Configuration Tool.

