

## Appendix D: How to Publish the Session Savior App in AVD

*Note: In order to publish the Session Savior app in AVD, you must either:*

*1.) Install the Fix My Session Agent components to the new Session Savior session host VM(s) you created when building the new Session Savior host pool in the previous step. If you have not done this yet, do so in the Fix My Session Configuration Tool, under the Host and Agent Management Tab.*

*OR*

*2.) If you have created an "all-in-one" host for Fix My Session that acts as both the Fix My Session master server AND as the RemoteApp for the Session Savior application, only publish the Fix My Session Agent components to the actual AVD hosts serving your line of business applications, and see the notes below on how to publish the Session Savior RemoteApp on the VM also acting as the Fix My Session master server.*

**1.) First, check and see if the Host Pool creation wizard created any new, empty Application Groups or Workspaces associated with your new Session Savior Host Pool. If so, remove them.**

**2.) Next, navigate to Application Groups and click "Create."**

Azure Virtual Desktop | Application groups ...

Microsoft

Search

**+ Create** Manage view Refresh Export to CSV

Overview

Quickstart

Manage

Host pools

**Application groups** ☆

Workspaces

App attach

An application group is a logical grouping of applications that are available to users to connect to. Click here to learn more.

Filter for any field... Subscription equals all Resour

<input type="checkbox"/>	Name ↑	Resource Group	Lo
<input type="checkbox"/>	ARM.	...	Eas

3.) Select the Subscription and Resource Group associated with your other AVD host pools that Session Savior will fix hung sessions on. Select the Session Savior host pool you created previously. Then, type in a name for the Session Savior application group, and set the type to "RemoteApp." Then click "Review + Create" to create the new Application Group.

### Create an application group ...

Basics Applications Assignments Workspace Advanced Tags Review + create

Subscription \* ⓘ Microsoft

Resource group \* ⓘ WVD  
[Create new](#)

Host pool \* ⓘ SessionSavior

Location ⓘ East US  
**i** Metadata stored in same location as host pool

**Application group type**  
RemoteApp application groups are where you can add applications. A Desktop application group will grant full desktop access.

Application group type \* ⓘ  RemoteApp  Desktop

Application group name \* SessionSaviorRemoteApps ✓

**Review + create** < Previous Next: Applications >

4.) Locate your newly created Session Savior Application Group in the list, and click on it.

**Azure Virtual Desktop | Application groups** ...

Microsoft

Search

Overview  
Quickstart  
Manage  
Host pools  
**Application groups** ☆  
Workspaces  
App attach  
Scaling plans  
Users  
Custom image templates  
Monitoring  
Licensing

+ Create    ⚙️ Manage view    ↻ Refresh    ↓ Export to CSV

*An application group is a logical grouping of applications that are available to users to connect to. Click here to learn more.*

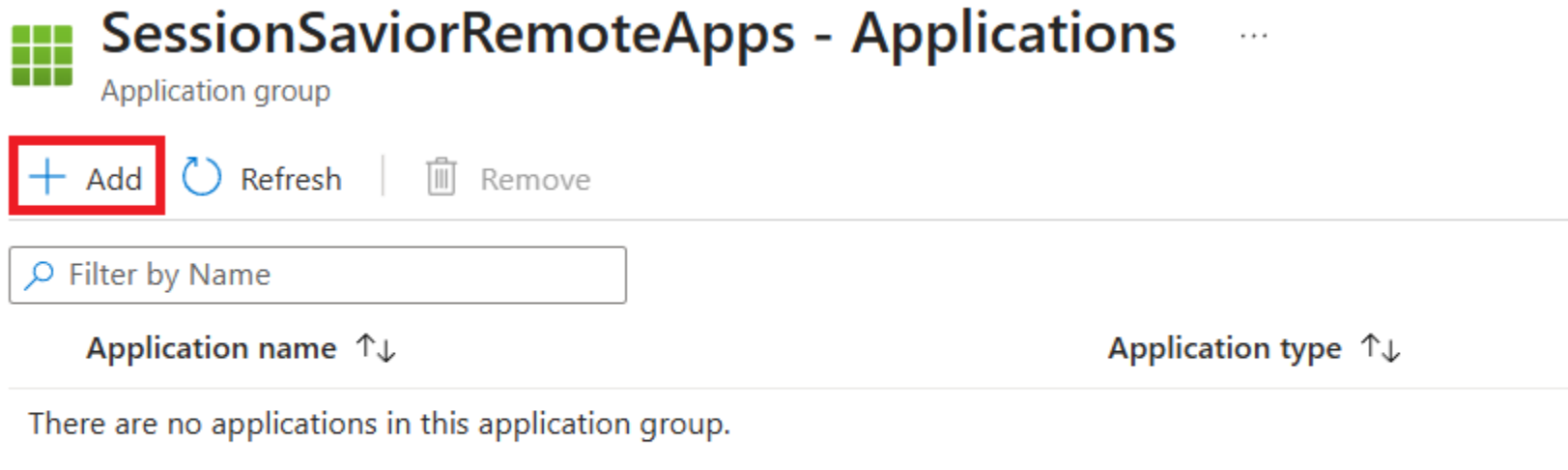
Filter for any field...    Subscription equals **all**    Reso

<input type="checkbox"/>	Name ↑	Resource Group
<input type="checkbox"/>	ARM2004-DAG ...	WVD
<input type="checkbox"/>	<b>SessionSaviorRemoteApps</b> ...	WVD

5.) Next to the "0 Applications" entry, click "Manage."

The screenshot shows the Azure portal interface for an application group named "SessionSaviorRemoteApps". The page includes a navigation sidebar on the left with options like Overview, Activity log, Access control (IAM), Tags, Diagnose and solve problems, Resource visualizer, Settings, Manage, Monitoring, and Automation. The main content area displays "Essentials" information such as Resource group (WVD), Location (East US), Subscription (Microsoft), and Subscription ID (50). At the bottom, there are two summary cards: "0 Applications (manage)" and "0 Assignments (manage)". The "(manage)" link in the Applications card is highlighted with a red rectangular box.

6.) Click the "+Add" button to add the Session Savior application to this Application Group.



**SessionSaviorRemoteApps - Applications** ...  
Application group

**+ Add** Refresh | Remove

Filter by Name

Application name ↑↓      Application type ↑↓

There are no applications in this application group.



7.) For Application Source, select "File Path." For Application Path, type in: *C:\Program Files\RDPSoft\Fix My Session Agent\SessionSaviorUI.exe*.

**Note:** If you are using the same VM running the primary Fix My Session application (e.g. Configuration Tool, etc) as the Session Savior RemoteApp host to save money, the Application path here should be *C:\Program Files\RDPSoft\Fix My Session\SessionSaviorUI.exe* instead.

For Application Identifier, you can type in "SessionSaviorID" or similar. For Display Name and Description, enter what you would like your users to see in their AVD clients. For Require Command Line, choose "No." Then click "Next."

Add application ...

Basics Icon Review + add

Application source *	File path
Application path * ⓘ	c:\Program Files\RDPSoft\Fix My Session Agent\SessionSaviorUI.exe
Application identifier *	SessionSaviorID
Display name	Fix My Hung Session
Description	Access this RemoteApp to fix your hung session.
Require command line	<input checked="" type="radio"/> No <input type="radio"/> Yes

Previous **Next** Review + add



8.) For Icon Path, enter C:\Program Files\RDPSoft\Fix My Session Agent\SessionSaviorUI.exe . For Icon Index, type "0". Then click "Review + Add."

**Note: If you are using the same VM running the primary Fix My Session application (e.g. Configuration Tool, etc) as the Session Savior RemoteApp host to save money, the Icon path here should be C:\Program Files\RDPSoft\Fix My Session\SessionSaviorUI.exe instead.**

### Add application

Basics **Icon** Review + add

Icon path \*

Icon index \*

Previous Next **Review + add**

9.) With the Session Savior app now added to this Application Group, you need to make sure that your AVD users see this RemoteApp in their AVD clients and have the rights to execute it. Next to "0 Assignments," click "Manage."

**SessionSaviorRemoteApps** Application group

Search [ ] Delete [ ]

- Overview
- Activity log
- Access control (IAM)
- Tags
- Diagnose and solve problems
- Resource visualizer
- Settings
- Manage
- Monitoring
- Automation
- Help

**Essentials**

Resource group ([move](#)) : [WVD](#)

Location : East US

Subscription ([move](#)) : [Microsoft](#)

Subscription ID : 50

Tags ([edit](#)) : [Add tags](#)

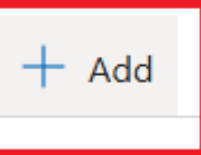


1 Applications ([manage](#))


0 Assignments ([manage](#))

10.) In the Assignments area, click the "+Add" button. Then, select the Entra ID / AD groups that house the AVD users whom you want to allow access to the Session Savior app and save your changes.

## SessionSaviorRemoteApps - Assignments ...

Application group

 Add  Refresh |  Remove

 Setup email discovery to help your users discover their resources using an email address instead of the de

Display name	Email address
There are no users or user groups assigned to this application group.	

11.) Now, you need to place the Application Group you have created above in an existing AVD workspace, or create a new AVD workspace for the Session Savior Application Group. If you already have a workspace you want to place the Session Savior application Group in, select that workspace, go to "Manage," and then click "+Add" to associate it with the existing workspace.

SessionSaviorWorkspace | Application groups  
Workspace

Search

+ Add Refresh Remove

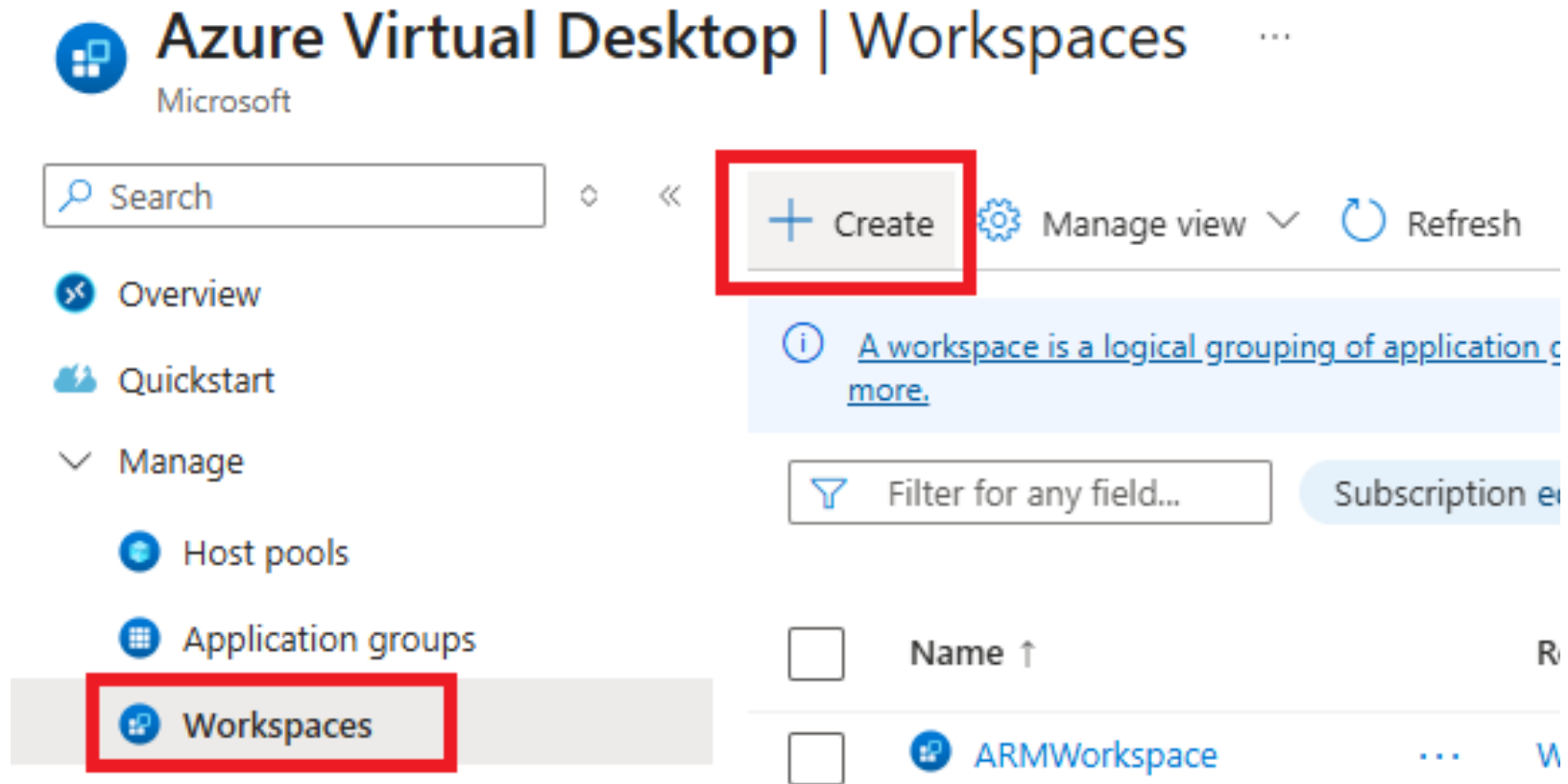
Filter by Name

Overview  
Activity log  
Access control (IAM)  
Tags  
Diagnose and solve problems  
Resource visualizer  
Settings  
Manage

<input type="checkbox"/>	Name ↑↓	Friendly name ↑↓
<input type="checkbox"/>	SessionSaviorRemote...	SessionSaviorRem

Application groups

12.) If you want to place the Session Savior app in a new, separate workspace, go to Workspaces and click "Create."



13.) Give the new workspace a name, and optionally a friendly name and description. Make sure it is located in the same Subscription, Resource Group, and Location as the rest of your AVD host pools. Then click "Next."

## Create a workspace ...

**Basics** Application groups Advanced Tags Review + create

Work space is a logical grouping of application groups. Users will only be able to access an application group published to them if it is registered to a workspace. [Learn more](#)

### Project details

Select the subscription to manage deployed resources and costs. Use resource groups like folders to organize and manage all your resources.

Subscription \* ⓘ

Resource group \* ⓘ  [Create new](#)

### Instance details

Workspace name \*  ✓

Friendly name

Description

Location \* ⓘ

[Review + create](#) [< Previous](#) [Next: Application groups >](#)

14.) Next, register the Application Group you created above with this new workspace. Then, click "Review + Create."

## Create a workspace ...

Basics **Application groups** Advanced Tags Review + create

Users will only be able to access the applications in an application group, if it is registered to a workspace. You can always create an empty workspace and register applications groups later as well. Work space is a logical grouping of application groups. Users will only be able to access an application group published to them if it is registered to a workspace.

Register application groups  No  Yes

Name ↑↓	Host pool ↑↓	Type ↑↓	
SessionSaviorRemoteApps	SessionSavior	RemoteApp	

[+ Register application groups](#)

**Review + create**

< Previous

Next: Advanced >

15.) Log in as an AVD user, and refresh your workspaces. If you have set everything up correctly, you should see the Session Savior utility as a published RemoteApp that your users can access to fix their own hung sessions.

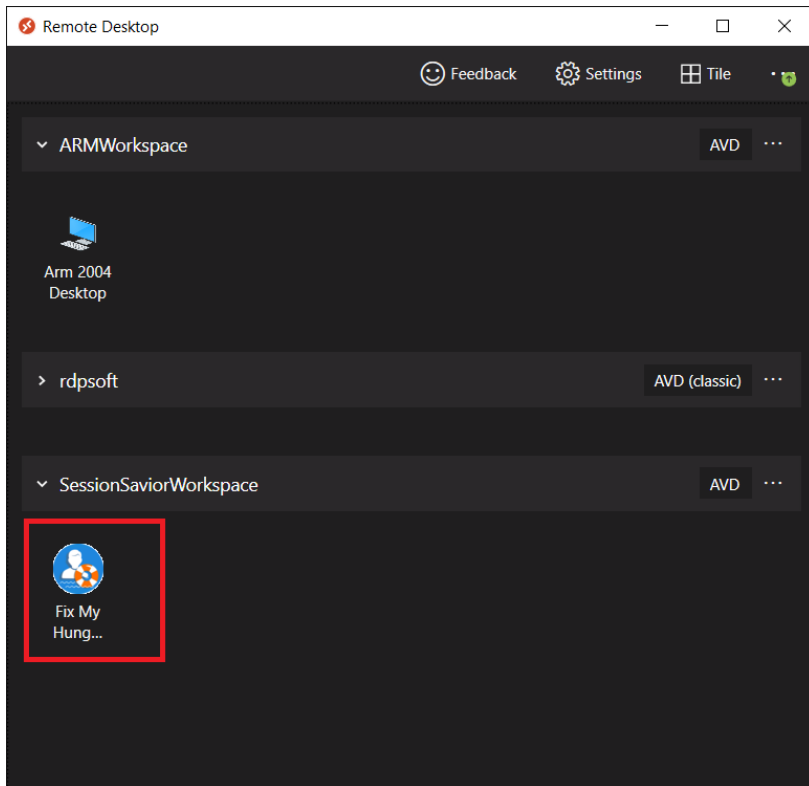


Figure 1 - Published Session Savior App in Legacy MSI AVD Client

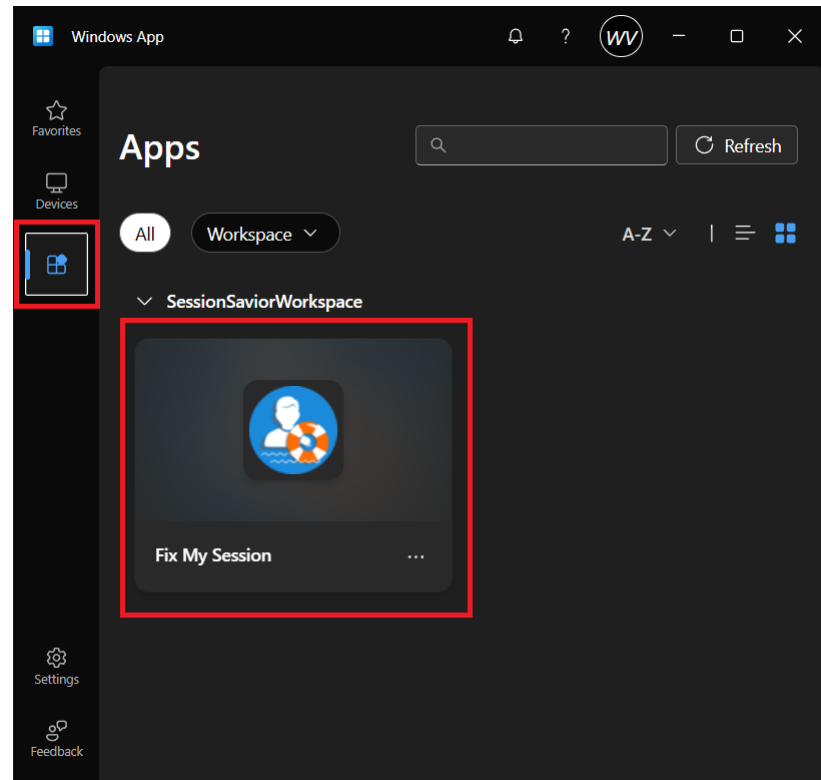


Figure 2 - Published Session Savior App in Windows App AVD Client