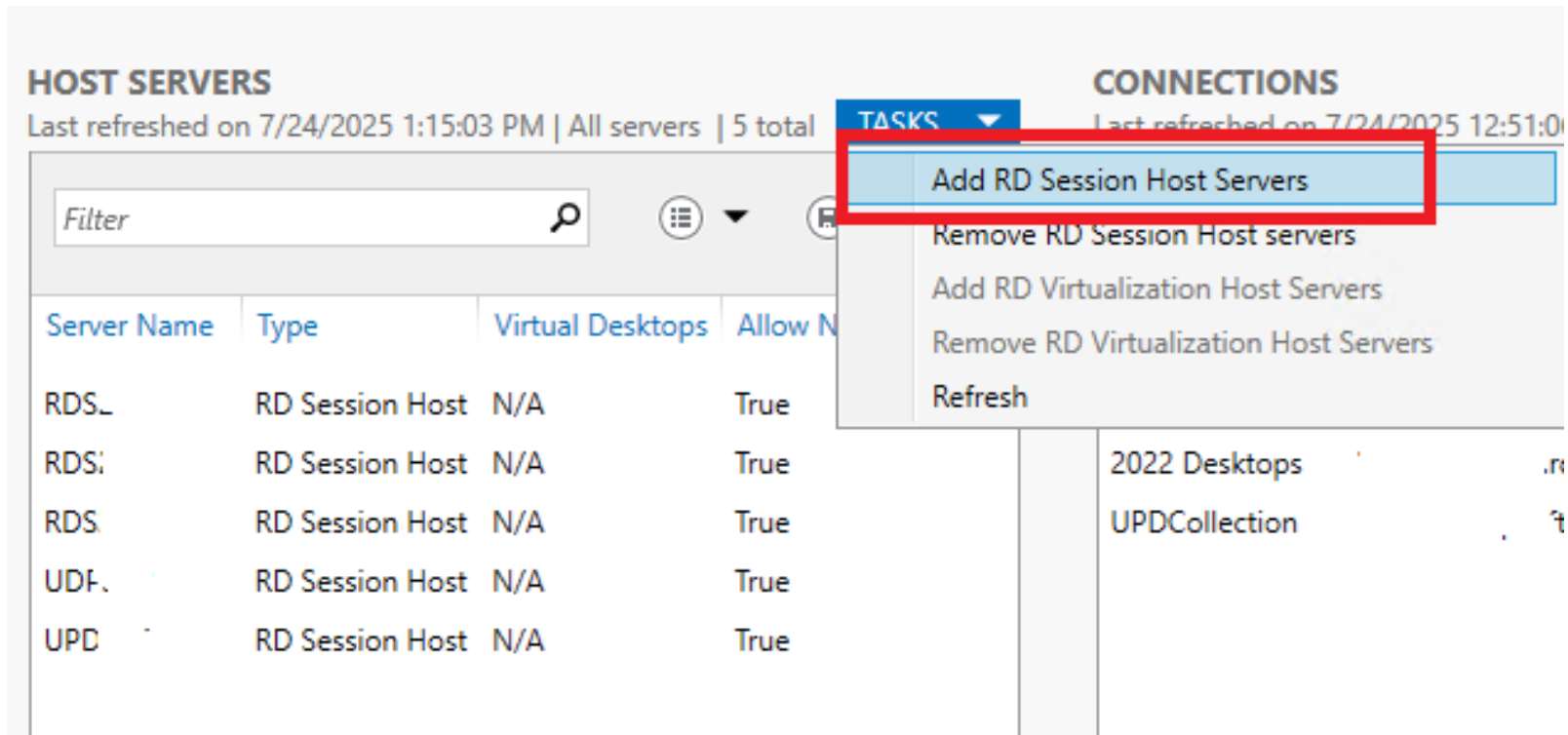
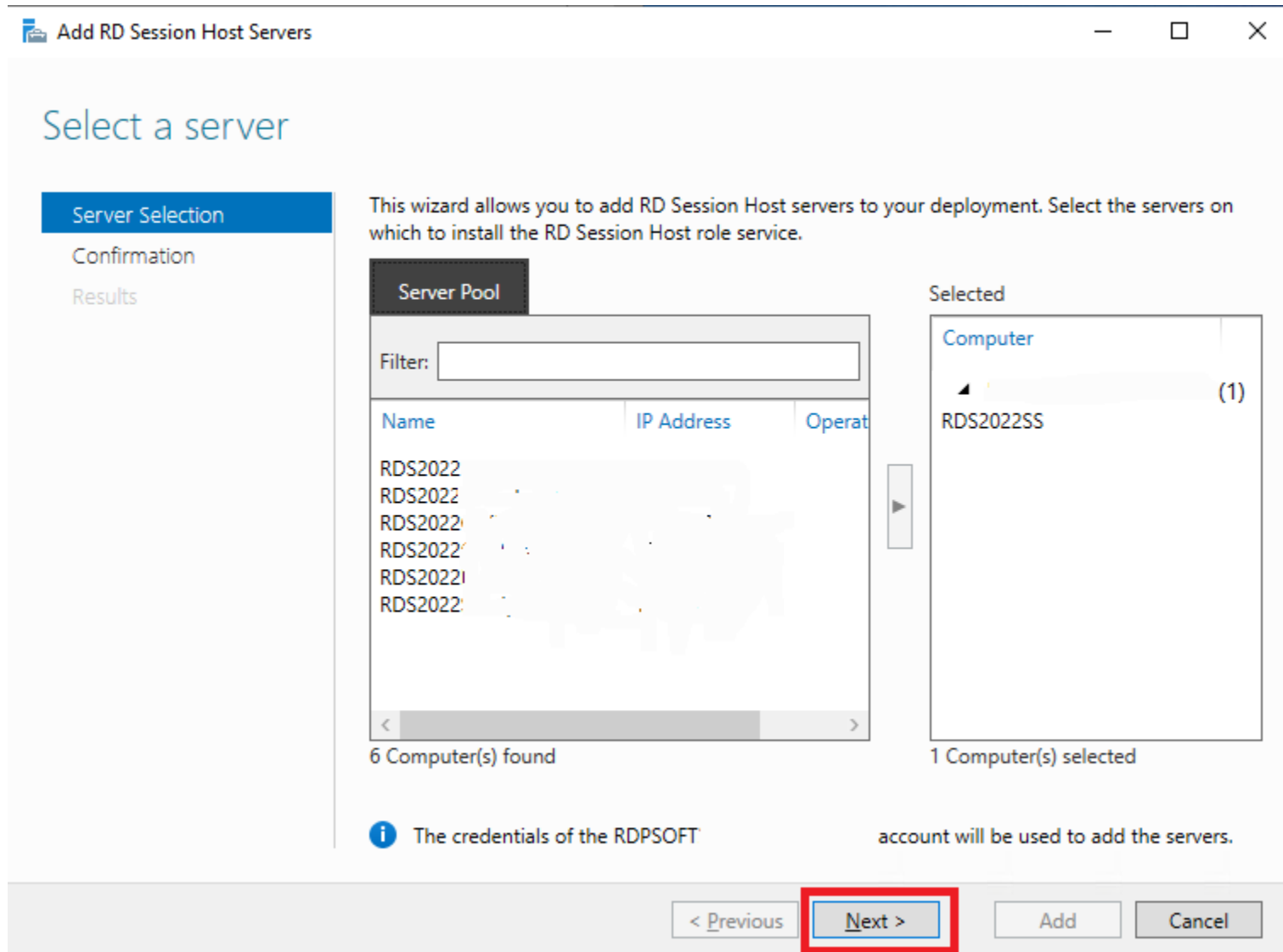


Appendix A: How to Create a Session Savior Collection in RDS

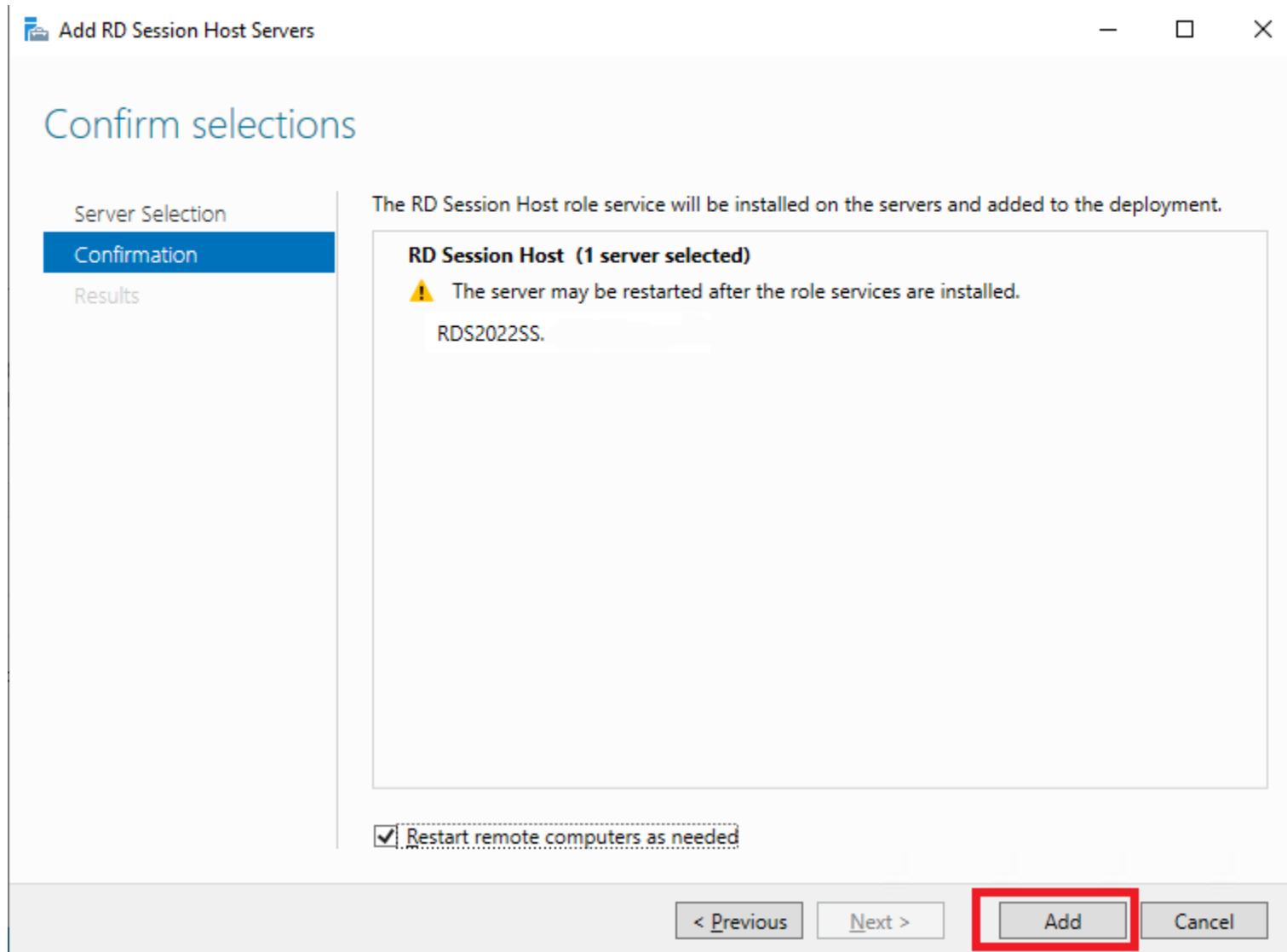
- 1.) Provision a new RDS host in your environment using your virtualization platform of choice, and join it to your Windows domain.
- 2.) In Server Manager on your Connection Broker, pull up the RDS Manager, and in the Deployment Properties, go to Host Servers, and under Tasks, choose "Add RD Session Host Servers."



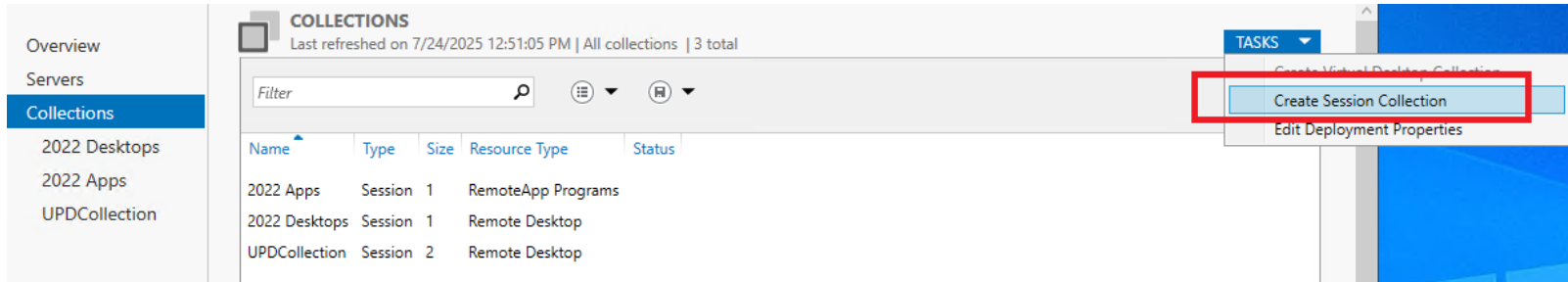
3.) Select your newly created RDS Host from the Server Pool, and click "Next."



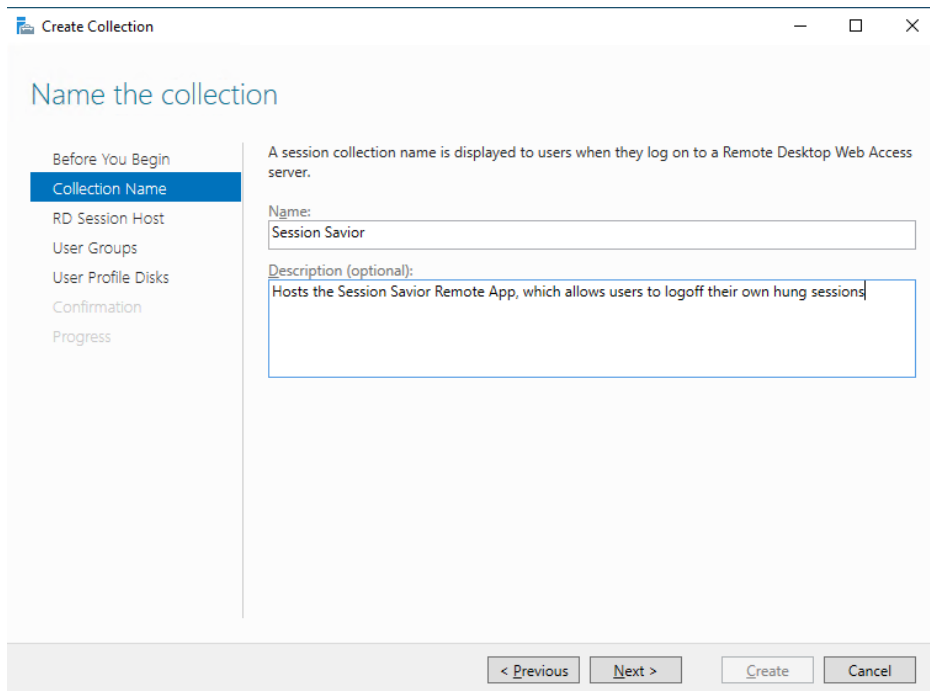
4.) Click "Add" to install the Session Host role on this new RDS host and add it to the deployment.



5.) In Server Manager on your Connection Broker, pull up the RDS Manager, navigate to the window that shows all of your existing RDS collections, and under Tasks, choose "Create Session Collection."



6.) Give the Session Savior Collection a name and description, then click "Next."



7.) Select your newly added session host, and click "Next."

Create Collection

Specify RD Session Host servers

Before You Begin
Collection Name
RD Session Host
User Groups
User Profile Disks
Confirmation
Progress

Select the RD Session Host servers from the server pool to add to this collection.

Server Pool		
Name	IP Address	Operat
RDS2022SS.r	..	

1 Computer(s) found

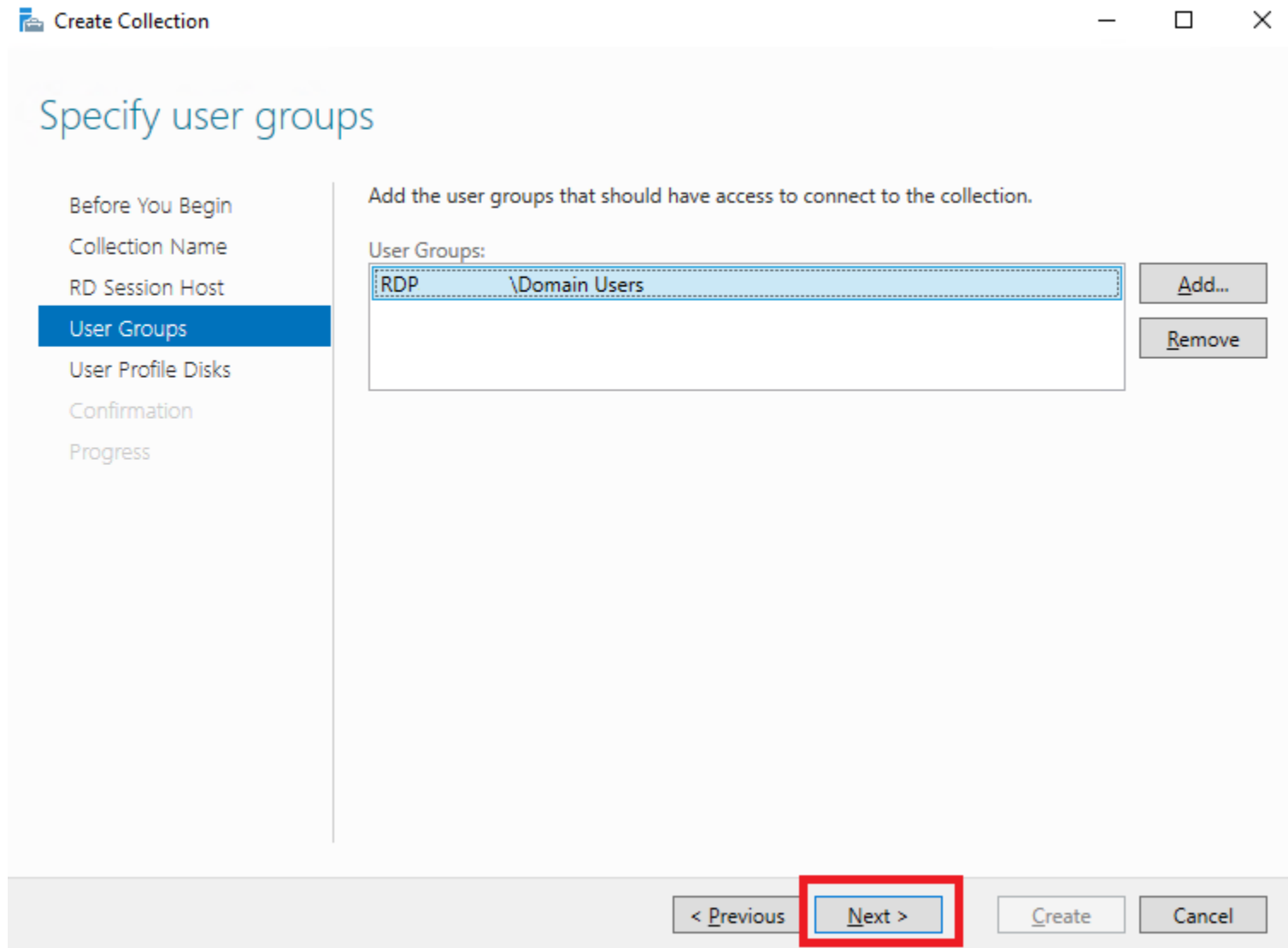
Selected

- Computer (1)
 - RDS2022SS

1 Computer(s) selected

< Previous **Next >** Create Cancel

8.) Specify the AD groups of users whom you will empower to fix their own sessions, then click "Next."



9.) Disable User Profile Disks, as the Session Savior UI does not need to roam any profile data, even if you publish it on multiple session hosts, then click "Next."

Create Collection

Specify user profile disks

Before You Begin
Collection Name
RD Session Host
User Groups
User Profile Disks
Confirmation
Progress

User profile disks store user profile settings and data in a central location for the collection.

Enable user profile disks

Location of user profile disks:

Maximum size (in GB):

i The servers in the collection must have full control permissions on the user profile disk share, and the current user must be a member of the local Administrators group on that server.

< Previous **Next >** Create Cancel

10.) Click "Create" to create this new RDS collection.

